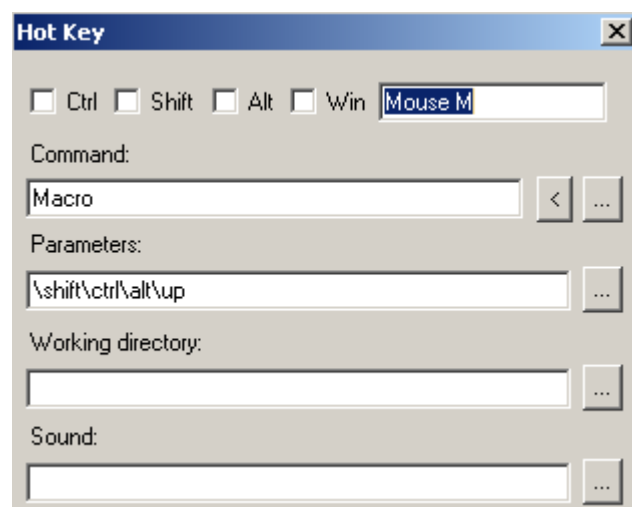
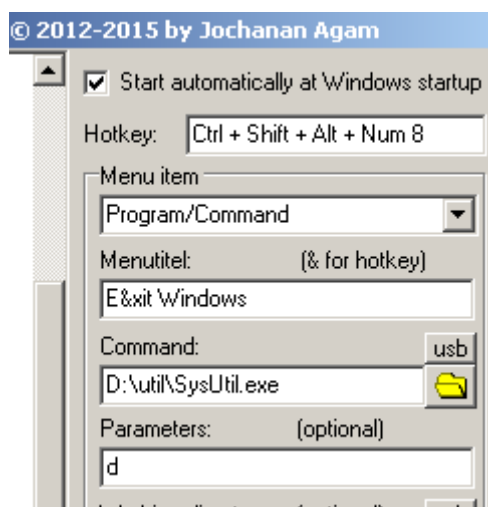


PopMenu

It is advisable to choose the PopMenu an "unusual hotkey" which hardly occurs in other programs, and then put it with an other tool on the appropriate buttons: with me the middle mouse button (scroll wheel button) and the "context menu".

In addition, there are required [HotkeyP](#) (freeware), which performs very well otherwise. And there my "Ctrl+Shift+Alt+Up" is now placed on the "middle mouse button". And with another entry, any other button ("context menu", "print screen", "scroll lock" or one of the multimedia keys) are assigned the PopMenu, as it itself not accepts those keys directly.



For "Caps Lock" or "Num Lock" is the enclosed (freeware) KeyTweak - Keyboard Remapper very useful. Because of the switch-function of these keys they can be remapped to free media keys for HotKeyP ...

And one more note:

The icons are displayed only if the path to the program or icon file is valid. This is useful f.e. if you use [Tcstart etc.](#)

If you copy the icon file into the true crypt container, you can already see in the PopMenu, if it is open or not.